

Colors to Dye For

Create a "floor of a different color" with Deso Dye for modern concrete flooring

Deso Dyes consists of specifically selected metal complex dyes formulated into a solution compatible with water or acetone. They are for use in indoor polished concrete applications where high color strength, ease of use, and absorption are requirements. Because they are dual-use (water/acetone-based), Deso Dyes meets the demands of many flooring projects.

A History of Innovation

In 2004 Déso Dye was the first dye in the industry to be used with polished concrete. It has been continuously improved to become more environmentally friendly and provide even greater color performance!



Déso

Solvent/Water-based Dyes for Concrete Floors

düraamen
engineered to perform

Features

- › Déso dyes come in ready-to-use 8.0oz containers. The liquid concentrate eliminates the typical 3 to 4 hour waiting time associated with powder dyes. Just add water or solvent. It's easy.
- › Deep color penetration & fast drying
- › An unlimited color palette can be created by mixing colors
- › Works with all types of concrete densifiers
- › Zero/very low VOC
- › Déso dyes can be easily shipped next day via FedEx or UPS
- › Highly competitively priced



black



burlywood



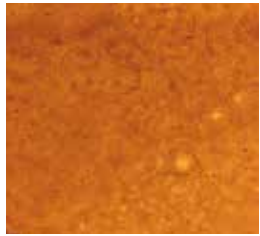
coral



dark rod



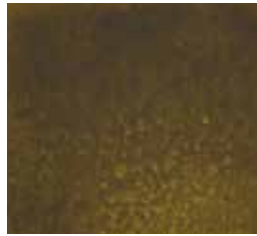
dark orange



gold



slate gray



khaki



magenta



olive green



peru



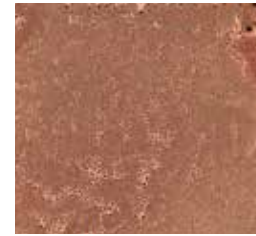
purple



red



rosy brown



salmon



reef green



sienna



sea blue



teal



yellow

Düraamen provides this color guide for preliminary color selection only. Please refer to a physical sample prior to making a final selection. Contact düraamen for assistance.



Contact your Düraamen-
preferred floor coatings installer
for more information, design
options, and a quote.